



# GAT MONTHLY MEMBERSHIP PROGRESS REPORT

Results as of: 4/30/2023

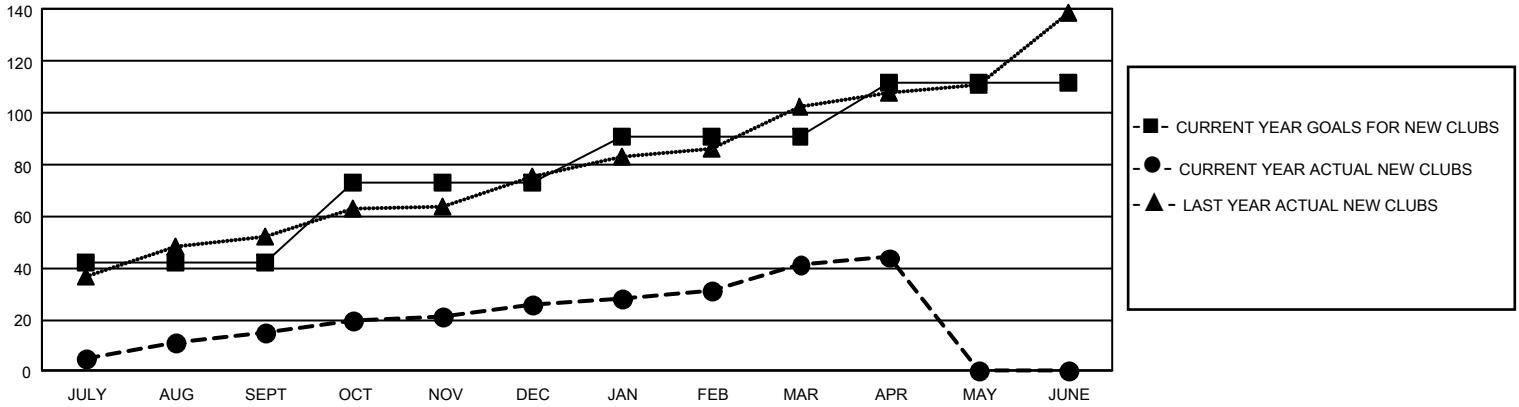
## GMT Constitutional Area 6, Group H

REPORT DOES NOT INCLUDE CLUBS IN UNDISTRICTED AREAS.

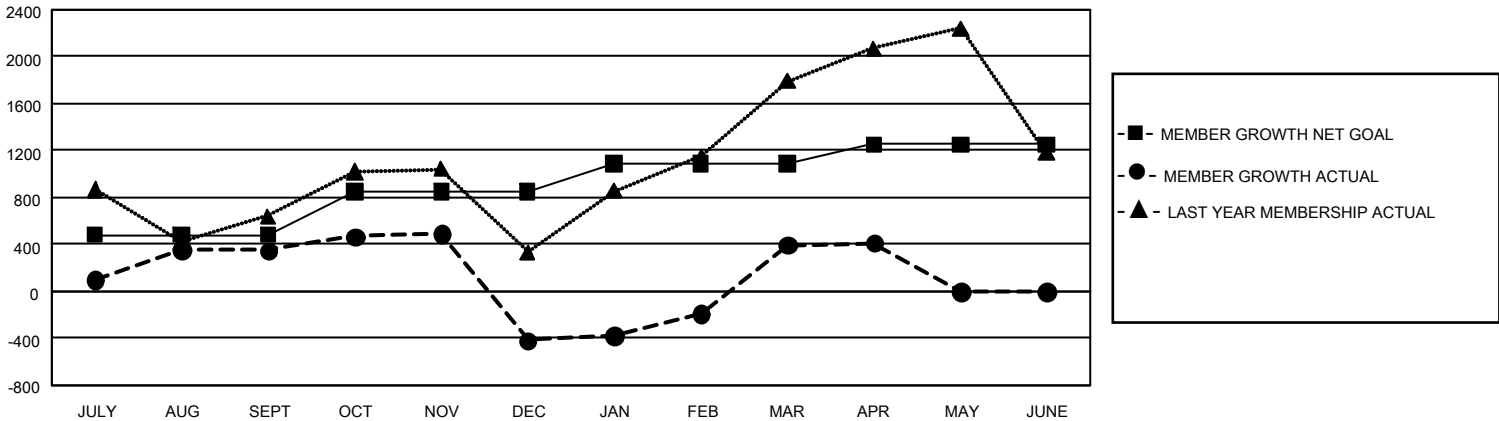
Clubs			
RESULTS FOR 2022-2023			
QUARTER	NEW CLUB GOAL	NEW CLUBS	DROPPED CLUBS
JULY/AUG/SEPT	126	15	8
OCT/NOV/DEC	93	11	36
JAN/FEB/MAR	54	15	13
APR/MAY/JUNE	63	3	0

Members			
RESULTS FOR 2022-2023			
QUARTER	MEMBER GROWTH NET GOAL	MEMBER GROWTH ACTUAL	DROPPED MEMBERS ACTUAL (including transfers)
JULY/AUG/SEPT	480	1,337	845
OCT/NOV/DEC	370	938	1,647
JAN/FEB/MAR	235	1,690	630
APR/MAY/JUNE	165	231	191

GOALS AND ACTUAL NEW CLUBS CUMULATIVE



GOALS AND ACTUAL MEMBERS CUMULATIVE



<b>DROPPED CLUBS: 57</b>	<b>582 CLUBS OF 1,174 ADDED 1 OR MORE NEW MEMBERS</b>	<b><u>GENDER DISTRIBUTION</u></b>	
		MALE 22,450 (67.63%)	FEMALE 10,734 (32.33%)
<b><u>DROPPED MEMBERS</u></b>		NON BINARY 0 (0.00%)	PREFER NOT TO ANSWER 13 (0.04%)
DECEASED 64	<a href="#">CLICK HERE FOR CUMULATIVE MEMBERSHIP DATA</a>	TOTAL FAMILY UNIT MEMBERS 20,284	
CLUB CANCELLED 782		FAMILY MEMBERS PAYING HALF DUES 12,500	
OTHER 2,467			
<b>TOTAL 3,313</b>			